



Kart

MACHINES

food industry - production of pet food



TABLE OF CONTENTS

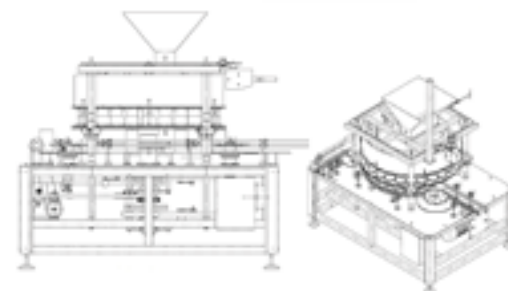
Volumetric filling machine	4
Steam tunnel	5
Cooling tunnel with cutting system	6
Can filling machine	7
Conveyor type Z	8
Twist Conveyor	9
Conveyor buffer	10
Rotary table	11
Vegetable dispenser	12
Meat pump	13

VOLUMETRIC FILLING MACHINE



MAIN FEATURES:

- Device designed to dispense cooked pet food into metal cans,
- Device is made of acid resistant steel,
- Supporting structure made of closed profiles,
- Regulation of volume of dispensing food,
- Interchangeable cartridges, worms, barriers, rosette for different type of cans,
- Regulation of filling speed – inverter,
- Two speeds of filling - in case of overloading chamber,
- Buffer with lockable option (during operation),
- Structure on levelling feet (80) or on wheels (50) with brake.



Parameters	Unit of measure	Value
Length	mm	~1400
Width	mm	~2000
Height (cans diameter 73 x 103)	mm	~1850
Height (cans diameter 100 x 175)	mm	~2000
Can dimension v1	mm	73, L=103
Can dimension v2	mm	100, L=100÷185
Height of inlet conveyor	mm	~900 ±50
Cartridge diameter	mm	1150
Cartridge height	mm	250
Max. speed of cartridge - option 1	rpm	28
Productivity	rpm	3500÷10000
Max. temperature of food in cartridge	°C	50
Drive	rpm/kW	14/2,2
Weight	kg	1600
Power supply	VAC/Hz/A	3x400/50/6



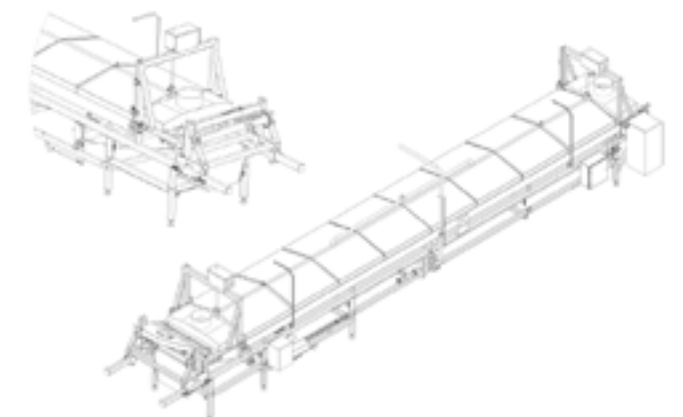
STEAM TUNNEL



MAIN FEATURES:

- Steam tunnel uses process steam for cooking pet food,
- The device is designed as a framed structure, made of acid resistant steel profiles,
- Frame with the upper wastewater tub and steam supply system,
- Option – bottom wastewater tub,
- Isolated, removable top cover with steam supply system,
- Isolated bottom cover,
- Steam exhaust,
- Transmission shaft of belt integrated with motoreducer,
- Driven shaft with belt tension unit,
- Food dispensing die 2x600mm or 1x1000mm (slots in die – options: 5x10, 8x16.5, 12x12),
- Electrical mechanism of lifting top cover,
- Electrical mechanism of belt,
- Regulation of quantity of supplied steam by dampers (2 pieces – top and bottom) and electrical valve ASCO, steam supplied in two places in top cover and in three places in bottom cover,
- Regulation of the temperature – one ASCO electrical valve, two temperature controllers, electrical valve control by controller in output section; temperature measurement in top cover

Parameters	Unit of measure	Value
Total length	mm	10500
Length of the chamber	mm	8000
1st option – width of the belt	mm	1000 (preferable)
2nd option – width of the belt	mm	1200
Width 1st / 2nd option	mm	~1700
Total height	mm	~1950
Operation height	mm	~1155
Diameter of going barrel	mm	350
Max. linear speed of belt	m/min	5,6
Max. speed of going barrel	rpm	5,1
PTFE belt with Kevlar	L [mm]	19500
Max. volume of cooked food (die 10x5 or 16,5x8 or 12x12)	kg/h	~(1500÷2000)
Temperature of given food	°C	5-15
Temperature in steam chamber	°C	max. 100
Temperature of steam	°C	180
Steam pressure	bar	2,0
Minimum capacity of steam generator	t/h	~2,0
Min. efficiency of ventilator 2 pieces	m3/h	2x3000
Diameter of the steam outlet	mm	312
Valve that supplied steam – ASCO - 1 piece	inches	G2
Drive - motoreducer	kW/Nm	0,75
Power supply (without ventilators)	VAC/Hz/A	3x400/50/6
Weight	kg	2000



COOLING TUNNEL WITH CUTTING SYSTEM



MAIN FEATURES:

- The device designed as a framed structure, made of acid resistant steel profiles,
- Frame structure,
- Upper cover,
- Transmission shaft of belt integrated with motoreducer,
- Driven shaft with wire net tension unit



Parameters	Unit of measure	Value
Total length	mm	5475
Length of cooling chamber	mm	4460
1st option - width	mm	1665
1st option – width of wire net	mm	1070
2st option - width	mm	~1865
2st option – width of wire net	mm	1270
Total height	mm	~1350
Height of wire net	mm	~1050
Diameter of going barrel	mm	180
Max. rotational speed	obr./min.	9
Max. linear speed of wire net	m/min.	5,6
Wire net made of stainless steel	L [mm]	10500
Drive - motoreducer	kW	1,5
1st option – drive of cutting device – max speed – one gear motor l=15, min	kW-rpm./min	I bieg 1,5 - 93 II bieg 1,5 - 187
Required capacity of ventilator	m3/h	~6000
Diameter of air inlet/outlet	mm	312
Required air cooler	kW	min. 22
Length of meat pieces	mm	10÷40
Meat temperature on exit	°C	~50
Power supply	VAC/Hz/A	3x400/50/~9
Weight	kg	~1200



CAN FILLING MACHINE



MAIN FEATURES:

- Can filling machine is used to dispense sauce into metal cans,
- Device is made of acid resistant steel,
- Supporting structure made of closed profiles,
- Conveyor speed regulation – inverter,
- Pump capacity regulation – inverter,
- Supporting structure – on levelling feet,
- Filling- by tube with nozzles or by chute

Parameters	Unit of measure	Value
Length	mm	~3000
Width	mm	~800
Height with shield	mm	~1200
Height of conveyor	mm	900 ±50
Width of conveyor	mm	114,3
Max. rotational speed of transmission shaft	rpm	35
Max. linear velocity of conveyor	m/min	14,2
Pump efficiency		100÷400
Max capacity of pump with open rotor	n/mm	~250
Power of driving motor	kW	0,55
Pump power CO4 500/03 K/A	kW	0,57
Power supply	VAC/Hz/A	3x400/50/4
Weight	kg	250

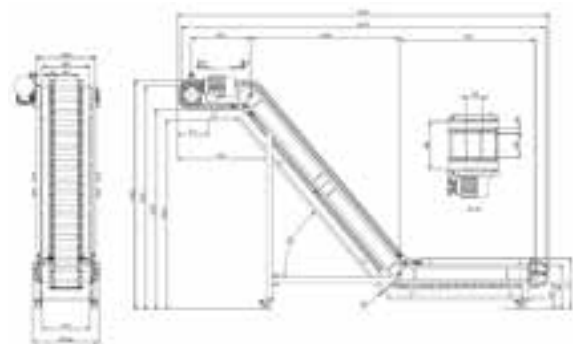


CONVEYOR - TYPE „Z”



- MAIN FEATURES:**
- Conveyor is intended to transfer small food products,
 - The device is designed as a framed structure, made of acid resistant steel,
 - Frame with sewage chute and shields,
 - Tape going barrel,
 - Driven barrel with tape tension unit,
 - Four sets of tape rollers,
 - Mechanisms of regulation of the tape

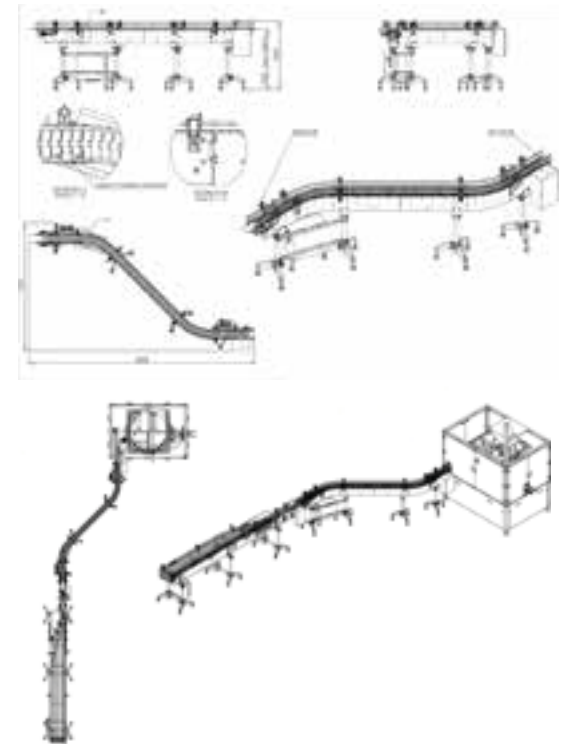
Parameters	Unit of measure	Value
Total length	mm	~3750
Width	mm	~660
Width of the tape	mm	480
Total height	mm	~2300
Max. linear speed of the tape	m/min	73
Power supply	VAC/Hz/A	3x400/50/~6
Parameters of the tape		
Type		P22-21N FDA
Length and width	L[mm] x S[mm]	9080x480
Height of aside furbelow	mm	60
Width of aside furbelow	mm	46
Height of driving claw	mm	60
Length of driving claw	mm	240
Spacing of driving claw	mm	150
Weight	kg	370
Drive	kW	2,2



TWIST CONVEYOR



- MAIN FEATURES:**
- Device is designed for transporting cans, jars and alupacks,
 - Conveyor is made of acid resistant steel, equipped in drive and control system,
 - On the sides of the conveyor there are barriers which are limiting falling out transported products,
 - Belt speed regulation - inverter.



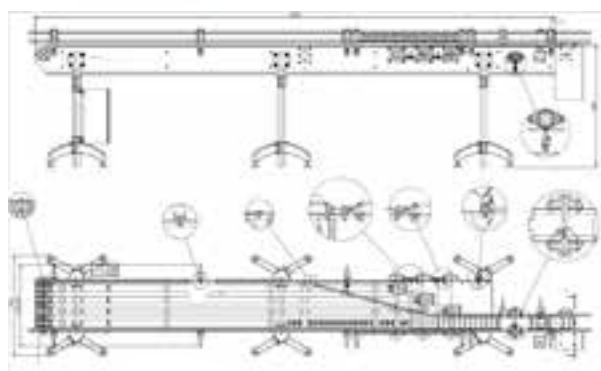
Parameters	Unit of measure	Value
Length	mm	~3350
Width	mm	~1900
Width of the tape	mm	1x114,3
Height	mm	1020 ±50
Angle of twist	°	2x45°
Max. linear speed	m/min.	14
Max. rotation speed of shaft	rpm	35
Drive – RVM 50 40 71-4 B14	kW	0,25
Power supplu	VAC/Hz/A	3x400/50/1,2

BELT CONVEYOR – BUFFER



MAIN FEATURES:

- Belt conveyor – buffer is designed for transporting cans, jars and alupacks,
- Conveyor is made of acid resistant steel, equipped in drive and control system,
- On the sides of the conveyor there are barriers which are limiting falling out transported products,
- Belt speed regulation - inverter.



Parameters	Unit of measure	Value
Length	mm	~4000
Width	mm	~750
Width of tape	mm	4x82,5
Height	mm	900 ±50
Max. linear speed of the tape	m/mi.	14,2
Max. rotation speed of shaft	rpm	35
Drive - CM 050 U40 B14	kW	0,25
Power supply	VAC/Hz/A	3x400/50/1,2
Weight	kg	250

ROTARY TABLE

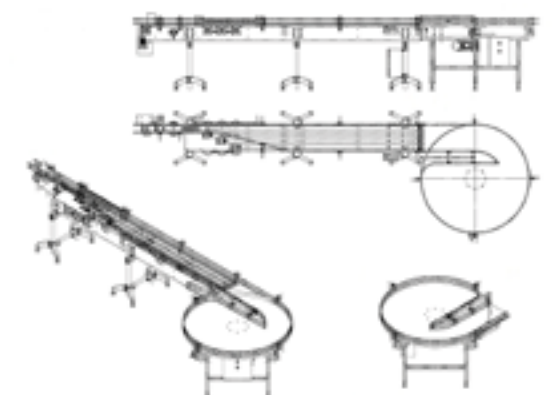


MAIN FEATURES:

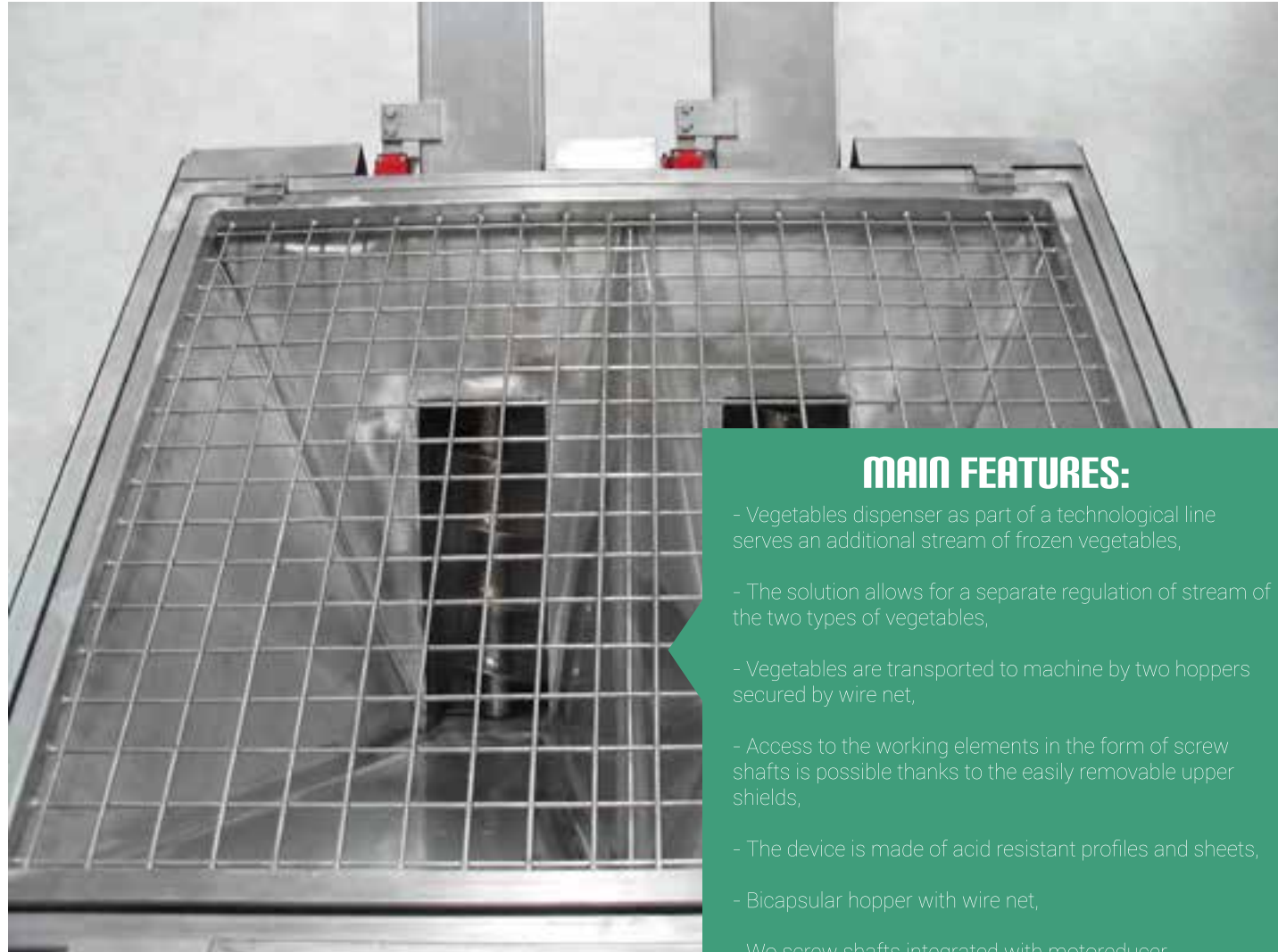
- The rotary table is designed for transporting cans, jars and alupacks,
- The machine is made of acid resistant steel and equipped in drive and control system,
- The supporting structure of closed profiles,
- Torque limiting clutch 30Nm – regulate,
- Speed control – inverter,
- Different types and configurations of the barriers.



Parameters	Unit of measure	Value
Diameter of the table top	mm	1st option: 1000 2nd option: 1500
Thickness of the table top	mm	1040 ±50
Height	mm	9
Max.speed	kW/Nm	0,37
Drive CM075U100B14 900	rpm	100
Power supply	VAC/Hz/A	3x400/50/1,2
Weight	kg	150



VEGETABLES DISPENSER



MAIN FEATURES:

- Vegetables dispenser as part of a technological line serves an additional stream of frozen vegetables,
- The solution allows for a separate regulation of stream of the two types of vegetables,
- Vegetables are transported to machine by two hoppers secured by wire net,
- Access to the working elements in the form of screw shafts is possible thanks to the easily removable upper shields,
- The device is made of acid resistant profiles and sheets,
- Bicapular hopper with wire net,
- Wo screw shafts integrated with motoreducer,
- Removable shields,
- Frame bearer and base with wheels.



Parameters	Unit of measure	Value
Capacity of single chamber	L	30
Max. efficiency of dispensing per one hopper	kg/h	13÷30
Power of motoreducer	kW	2x0,12
External diameter of screw	mm	90
Diameter of hopper	mm	30
Length of hopper	mm	2220
Width of the device	mm	730
Length of the device	mm	2100
Height of the device	mm	2200
Weight	kg	180
Power supply	VAC/Hz/A	3x400/50/5

PUMP



MAIN FEATURES:

- Pump for a meat is designed to dispense pulp (ground meat),
- Device is made of acid resistant steel, equipped with a pump and control system,
- Supporting structure made of closed profiles,
- Screw pump,
- Regulation of dispense speed - inverter.

Parameters	Unit of measure	Value
Length	mm	~2900
Height	mm	~1300
Dimensions of the hopper	mm	~800x1000
Depth of the hopper	mm	~900
Capacity of the hopper	m3	0,34
Efficiency Q (50Hz)	m3/h	2,5
Efficiency Q (30Hz)	m3/h	1,5
Height of uplift H (water)	m	80
Max. height of uplift H (water)	m	120
Drive SEW RX 97 DRE 132 MC4	rpm	250
Power of motor	kW	7,5
Max. temperature of a pulp	°C	20
Min. temperature of a pulp	°C	2
Flexible hose	DN	80
Weight	Kg	300
Power supplu	VAC/Hz/A	3x400/50/20



KART SPÓŁKA Z O.O.

KarT spółka z o.o. is an experienced and respected in the industry, manufacturer of technological machines and devices. We offer comprehensive tooling services, metalworking and plastics treatment.

A few words about the past...

KarT sp. z o.o. was established in 1983 as a technical plant offering services of metalworking for regional entrepreneurs. Over the years, the commitment of the owner and professionalism of employees established the company in the minds of customers as a reliable, recommendable supplier.

A few words about the present...

Currently, KarT sp. z o.o. is an enterprise that operates on European markets and according to European standards. It employs over 70 highly qualified employees. In addition to the treatment of metals and plastics we specialize in production automation and tooling production. Over 30 years on the market, ambitious and experienced staff has enabled us to design and implement the most complex project imaginable. Individual and unconventional approach to tasks, curiosity of the technology, minds opened to challenges – thanks to these features we supply our Customers with products and services of the highest quality.

A few words about the future...

Our main and constant goal is continuous development, improvement of skills and providing our Customers reliable products and services. We place special emphasis on dialogue with the Customer and his needs and problems motivates us to work harder and look for innovative solutions.



The logo consists of the word "Kart" in a white, italicized, sans-serif font, centered within a solid blue square.

Kart

KART SPÓŁKA Z O.O.

ul. gen. Wł. Andersa 40D, 15-113 Białystok
tel.: +48 85 743 30 64, fax: +48 85 743 75 87
bok@kart.com.pl, www.kart.com.pl